

PPCI

PARADISE

PEST CONTROL INDIA PVT.LTD

“Honesty, Integrity, Enterprise: Our Key to Success.”

New No.44, Old No. 269, 4th Street Extn., Gandhipuram, Coimbatore - 641 012.
Mob: 81110 02017, 81110 02019. Off: 0422 - 4373030.
E-mail: paradise.ppci@gmail.com

CCS (Cockroach Control Service)

The commonly seen pests are Cockroaches, Ants and Silverfish

Cockroaches are persistent and troublesome pests of homes, restaurants, hospitals, warehouses, offices and other structures with food handling areas. These insects contaminate food and utensils, destroy fabric and paper products, and impart stain and odor to surfaces they contact. Cockroaches are universally loathed. One of the primary reasons is because they are associated with any place where there are biological waste products such as sewers, septic tanks, garbage cans, chicken houses, animal cages. Rotting food, secretions from corpses, sputum and pus gives them a well-earned “disgust factor” among the general public. Types of cockroaches generally seen in homes are German cockroach & American cockroach



German cockroaches produce odorous secretions that can affect the flavor of various foods. It prefers a moist environment at a high degree of warmth. The insects are mostly scavengers and will feed on a wide variety of foods.

The **American cockroach** is the largest of the species which is abundant in city dumps and is most common in the basements and steam tunnels of restaurants, bakeries, food-processing facilities and grocery stores.



All these moist, organic habitats contain staggering amounts of bacteria, protozoa, amoebae, fungi, and other microbial material. The Bacillus and E-Coli Bacteria causes

- Food poisoning.
- Diarrhea, Wound infections.

Ants: There are more than 12,000 species of ants in world. Ants are frustrating when they get into home, ants do help the environment. These social insects lives in colonies or groups. Ants will eat almost anything, including insects, grease, seeds, honeydew, honey, bread, meats, nuts etc., and do not eat the wood they remove during their nest-building activities, but deposit it outside entrances to the colony in small piles. It nests in soil next to and beneath slabs, sidewalks, patios and driveways.



Silverfish: Silverfish normally live in outdoors under rocks, bark and leaf mold. It lives for about 2 – 2.5 years. It feeds on dried beef, flour, starch, paper, gum, glue, cotton, linen, rayon, silk, sugar, molds, breakfast cereals, book bindings and wall paper paste. They may also be known as bristletails, fishmoths, tasseltails or fringetails.

Treatment

We are engaged in providing gel and spray treatment. Spraying is done for wall and floor junctions, ditches, drainage, manholes and septic tank. This is highly effective in providing control over cockroaches, gel can be applied in dots at different places of food handling area and electronic based items. Gel treatments are totally safe and eco-friendly.

TCS (Termite Control Service)

Termites are often called the “silent destroyer” because they may be secretly hiding and thriving in your home or yard without any immediate signs of damage provide cellulose food for termite infestation. There are four major types of termites they are Subterranean, Drywood, Dampwood and Formosan termite. Termites range from 1/4 – 1/2 an inch in length.



The queens and kings grow over one inch long. The workers are typically soft-bodied and pale-colored. They feed on dead plants and trees. Termites live in wooden structures, decayed trees, fallen timber, and soil. Subterranean termite homes are usually formed in soil. They build elaborate tunnel systems and mud tunnels through which they access above-ground food sources. Drywood termites live within the wood they consume and oftentimes infest walls and furniture.



Treatment

Termite control service is done by drill, fill and seal which is odourless and eco-friendly, effective by a proper chemical dilution to get a chemical barrier to your house or property to save your dream.



WBCS (Wood Borer Control Service)

WBCS: Wood borers are insects that bore into the wood of host trees that are freshly cut, injured, dying, or recently dead. Boring dust and entrance or exit holes on the bark or surface of the wood are diagnostic. Prominent wood borers include: flatheaded and roundheaded woodborers. Powder Post beetles usually feed on hard woods.

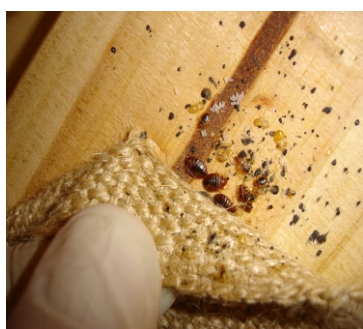


Treatment

It is specialized oil base treatment service with combination of fumigant and contact disinfectant chemical for wood preservation without damaging. Its texture and polish quality requires insect disinfectant into the exit hole with the injection and general spray and wood infested surface of furniture for effective treatment result against wood borer.

BBCS (Bed Bug Control Service)

Bed bugs only feed on blood. Under cool conditions, they are able to survive up to a year without a meal. It is more active at night when the host is asleep. They are found in cracks and crevices, including mattress seams, sheets, furniture, behind baseboards, electrical outlet plates and picture frames. Once indoors, it can be very difficult to control without the help of an experienced pest specialist. Common bed bug seen in *Cimex Lectularius* - particularly adaptable to human environments.



Treatment

The infected area and material present in the room are completely removed, to do complete spraying the households are kept in sunlight for a day or to remove the harmful bugs. It is necessary to check every 15 days once after the service is done. frequency service is necessary to remove bed bugs.



RCS (Rodent Control Service)

“True rats” are members of the genus *Rattus*, Rats are found all over the world. House and brown rats usually use humans for their primary food source. They will scavenge through trash or eat any food that is left unprotected. They are capable of transmitting a variety of bacteria, viruses and diseases through their saliva, feces and urine. Rodent include roof rat, house mouse & bandicoots. They spread disease to human beings.

Treatment

Trapping through rodent controlling box with Glue Gum Pads and Bromadiolone poison baiting.



MCS (Mosquito Control Service)

Mosquitoes can live in any environment, with the exception of extreme cold weather. Because they must have water in order to thrive, their habitats. There are two basic types: Permanent water mosquitoes: Culex and Anopheles prefers the standing water for its survival. It breeds in wading pools, buckets or toys left outside. Flood water mosquitoes are seen in drainage, ditches that fill during storms. Mosquito will drink the human blood until it gets full, withdraw the proboscis and fly away. Often, the person bitten doesn't even realize it until a minor allergic reaction causes the site to swell and itch. Mosquito-borne diseases – include malaria, West Nile, and dengue fever. Chikungunya include sudden fever, joint pain with or without swelling, chills, headache, nausea, vomiting, lower back



Treatment

Larvicides are chemicals designed to be applied directly to water to control mosquito larva. Adulticides are used in fogging and spraying to control adult mosquitoes.

FLY NIL (Fly Catcher M/C)

Different insects are attracted to various kinds of wavelength, but commonly you will find light traps that emit fluorescent UV light. The lights acts as a lure and when these lights are combined with the sticky traps, as many of these fly trap lights, work not only to attract the bugs to one area but also to keep them from leaving. You can use glue boards or strip alone, but adding the light can increase your bug catch potential.



Treatment

Chemical emulsions are sprayed at breeding and harborage site like drains & garbage.



Benefits of UV FLY Light Traps

- Ultraviolet rays are not harmful to people or pets, unlike toxic chemicals.
- No unpleasant odors.
- Powerful ultraviolet light provides for optimum coverage.
- Ultraviolet rays attract a wide range of flying insects, not just flies.
- Many ultraviolet fly traps are designed to look like ordinary light fixtures, making them perfect for discreet control in public venues.

Sterifume: is mostly applicable for the healthcare institutions like nursing homes, clinics, hospitals, food industries, pharmaceuticals, biotech industries, schools, clean room & research laboratories. It is must to keep the area clean and free from microbes. If the microbes areas are active in surroundings it leads a infection and contamination. Hence the Sterifog is used for fogging all types of water based disinfectants in closed rooms. Sterifog ULV fogger breaks the disinfecting liquid into very fine particles (0.1 -10 microns), which remain suspended in the air for a long time. This increases the contact time of disinfectant with micro-organisms in the air. The small particle size also ensures that there is minimum wetting of the surfaces. Sterifog when used with the right disinfectant ensures proper fumigation of closed spaces. This increases penetration & diffusion of the disinfectant. The surfaces also do not get wet.

